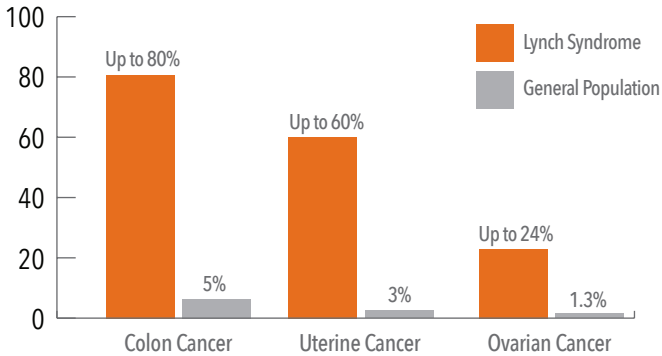


Mutations in the Lynch syndrome genes increase the risk of several cancers, including colon, uterine, and ovarian cancers.

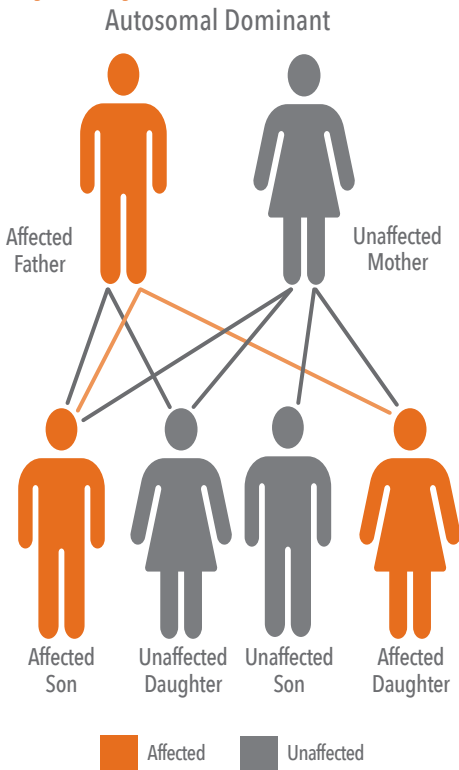


Lynch Syndrome Lifetime Risk ¹				
Cancer type	<i>MLH1/MSH2</i>	<i>MSH6</i>	<i>PMS2</i>	General population ²
Colon	40%-80%	10%-22%	15%-20%	5%
Uterine	25%-60%	16%-26%	15%	3%
Ovarian	4%-24%	1%-11%	-	1.3%

Individuals with Lynch syndrome are also at an increased risk for small intestine, stomach, pancreatic, urinary tract, brain, and prostate cancers.

Lynch syndrome is an autosomal dominant cancer predisposition syndrome caused by germline mutations in one of the mismatch repair genes *MLH1*, *MSH2*, *MSH6*, or *PMS2* or the *EPCAM* gene. Offspring of those with a mutation have a 50% chance of inheriting the mutation.

Lynch Syndrome Inheritance



Indications for Lynch Syndrome Genetic Testing¹

YOUR PATIENT	DIAGNOSIS	AGE OF DIAGNOSIS	FAMILY HISTORY
Personal history*	Colon or rectal cancer	<50	Not required
	Endometrial or uterine cancer	<50	Not required
	Colon or rectal cancer	Any	Parent, sibling, or child with colon, rectal, uterine, other gastrointestinal, urinary tract, or brain cancer diagnosed less than age 50
	2 separate colon or rectal cancers	Any	Not required
	Colon or rectal cancer	Any	2 other close blood relatives with colon, rectal, uterine, other gastrointestinal, urinary tract, or brain cancers
Close blood relative [†]			Close blood relative with Lynch syndrome/mutation in the Lynch syndrome genes

*If the patient does not have a personal history of cancer and the person in the family with the cancer is unavailable to test, consider testing the patient.

[†]Close blood relatives include parents, siblings, children, aunts, uncles, grandparents, nieces, and nephews on the same side of the family.

Help manage risk and improve chance of early detection
SURVEILLANCE AND RISK-REDUCTION OPTIONS FOR PATIENTS WITH LYNCH SYNDROME¹

CONDITION	SURVEILLANCE AND CONSIDERATIONS FOR RISK REDUCTION
Colon cancer	<ul style="list-style-type: none"> • Colonoscopy every 1 to 2 years, beginning in the 20s • If diagnosed with colon cancer, high-grade dysplasia, or precancerous polyp (adenoma) that is difficult to remove, discuss with surgeon risk-reducing subtotal colectomy
Uterine and ovarian cancers	<ul style="list-style-type: none"> • Consider periodic screening • Hysterectomy with bilateral salpingo-oophorectomy when childbearing is complete

HEREDITARY COLON CANCER/LYNCH SYNDROME GENETIC TESTING PROCESS

THE PROCESS	The DNA collection procedure is simple and requires only an in-office saliva collection with our sample collection kit. UPS will pick up your patient samples and deliver them directly to our lab (labels and instructions are included in each kit). Dedicated account services are always available to answer questions and manage requests.
THE TURN-AROUND TIME	15 to 20 days
THE REPORT	Upon completion of DNA extraction and evaluation, a comprehensive report is generated and uploaded to a secure portal with dedicated physician log-in and downloading capabilities. Physician-to-physician consultation is also available with our Medical Director or our Genetic Counselor. Monograph is available upon request.

CONTACT YOUR REPRESENTATIVE OR REACH US DIRECTLY AT OUR EMAIL ADDRESS BELOW TO OBTAIN SAMPLE TEST REPORTS AND DNA SAMPLE COLLECTION KITS FOR THIS OR ANY OF OUR OTHER ADVANCED GENETIC TESTING PANELS.

Jewish Genetic Diseases Carrier Screening	<i>BRCA1/2</i> Genetic Testing
Fragile X Syndrome Genetic Screening	Hereditary Colon Cancer/Lynch Syndrome Genetic Testing
Cystic Fibrosis Genetic Carrier Screening	Pharmacogenomics Testing

ABOUT PREMIER GENOMICS

Premier Genomics is committed to advancing the field of personalized genetic medicine by offering cutting-edge genetic screening services to help practitioners and their patients in pursuit of tailored treatment and optimized, personalized health care. We work together with patients and their insurance providers to help ensure that access to these important genetic tests does not cause patients financial hardship.